



THE BEST CHOICE

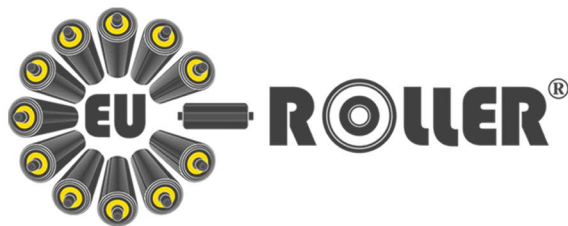
- for conveyor applications
- for heavy industry



PRODUCT CATALOG

www.eu-roller.com

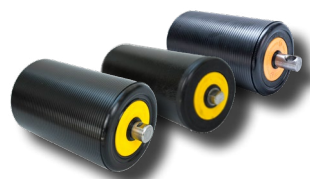
THE BEST CHOICE



Keep the world rolling
with Eu-Rollers!

Product range

◎ HDPE Rollers



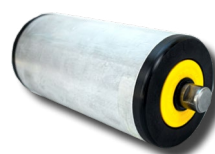
◎ Impact Rollers



◎ Picking-Idler Rollers



◎ Plasteel & Plasalu Rollers



◎ Rubber Disc Rollers



◎ Guide Rollers



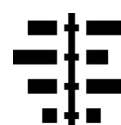
◎ Shaft materials and shaft ends



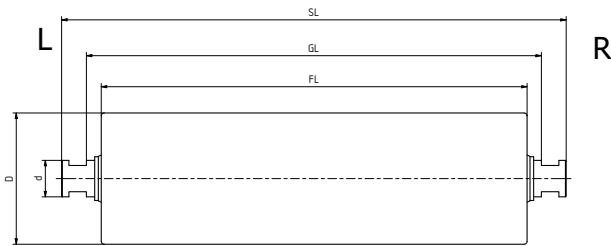
◎ Roller Designer



◎ Roller Coding



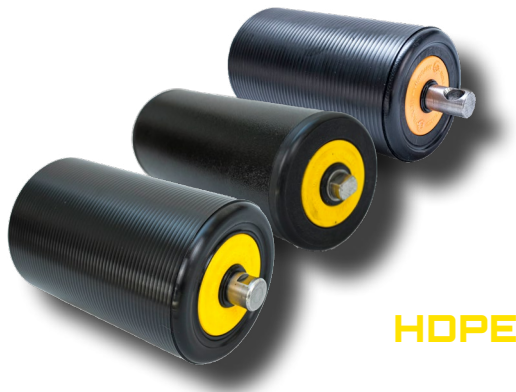
HDPE Rollers



THE MOST RESPECTED IN THE MARKET

OUR HDPE ROLLERS ARE WIDELY KNOWN AS THE MOST ESTEEMED PRODUCT IN THE CONVEYOR-ROLLER MARKET. THE EU-ROLLER'S DESIGN DELIVERS EXCEPTIONAL PERFORMANCE AND AN INDUSTRY-LEADING LIFESPAN.

HDPE Rollers represent a breakthrough in reinforced high-density polyethylene (HDPE) conveyor rollers. Featuring a unique design and incorporating our patented sealing arrangement, bearing and seal housing, and roller shell, HDPE Rollers offer a durable, long-lasting, and environmentally friendly alternative to traditional steel rollers. All plastic components are designed in-house and manufactured at our factory.



INNOVATIVE PATENTED TECHNOLOGIES

The Advanced Sealing System EU-Roller's patented Sealing System, which includes a back seal, a shock-resistant bearing cover, an outer seal, and four low-friction contact lip seals is manufactured according to the DIN and CEMA standards and is the most efficient sealing system currently available. This distinctive sealing system is non-corrosive, exhibits a very low friction coefficient, and offers high resistance to chemicals, acids, water, and wear.

APPLICATIONS

- ⊙ MINES
- ⊙ QUARRIES
- ⊙ CEMENT PLANTS
- ⊙ COAL-FIRED POWER PLANTS
- ⊙ DOCK INSTALLATIONS
- ⊙ WASTE RECYCLING

UNMATCHED PERFORMANCE

EU-Roller's HDPE Roller is engineered to perform in extreme temperatures, harsh environments, and highly corrosive, chemical, or coastal conditions that typically damage and destroy conventional steel rollers. The roller's main body is constructed entirely from HDPE, known for its exceptional resistance to abrasion and sun exposure, fire retardant properties, low friction coefficient, ability to absorb high impact forces, excellent gripping capabilities, and high melting point.

HDPE Rollers

ROLLER SURFACE OPTIONS

STANDARD SURFACE: Machined surface with micro ribs.

SMOOTH SURFACE: Machined, smooth surface, without micro ribs. The final step in the surface formation is precision turning, which ensures that the surface concentricity of the roller is less than 0.2mm.

OPTIONS FOR DUST PROTECTION

STANDARD - HDPE Rollers offer excellent resistance to abrasion and ultraviolet rays.

ANTI-SEIZE - The roller features EU-Roller's innovative Anti-Seize Technology, which includes a stationary side flinger „ROCK-GUARD" while the roller is in operation.

OUR HIGH – SPEC LUBRICANT MEETS ALL REQUIREMENTS

- CONTAINS ANTI-RUST AND ANTI-OXIDANT ADDITIVES
- EXCELLENT WATER-REPELLENT PROPERTIES
- MECHANICALLY STABLE
- HIGH-TEMPERATURE PERFORMANCE, OPERATING FROM BELOW -30°C TO +160°C

KEY BENEFITS

- ⊙ NON-CORROSIVE
- ⊙ EXCELLENT ABRASION RESISTANCE
- ⊙ EXTENDED LIFESPAN
- ⊙ SUITABLE FOR NEARLY ANY APPLICATION WHERE STEEL ROLLERS ARE USED
- ⊙ LIGHTER THAN STEEL ROLLERS, REDUCING START-UP COSTS FOR CONVEYOR DRIVES
- ⊙ RECYCLABLE
- ⊙ REDUCES VIBRATION AND MAINTENANCE COSTS
- ⊙ MINIMIZES DAMAGE TO CONVEYOR BELTS (NO PIZZA EFFECT)
- ⊙ QUIETER OPERATION COMPARED TO CONVENTIONAL STEEL ROLLERS
- ⊙ ENERGY EFFICIENT
- ⊙ WATERTIGHT SEALING ARRANGEMENT
- ⊙ PROLONGS THE LIFESPAN OF BEARINGS
- ⊙ COMPETITIVELY PRICED
- ⊙ REDUCES TOTAL COST OF OWNERSHIP
- ⊙ PERFORMS EXCEPTIONALLY IN HARSH WEATHER AND EXTREME CONDITIONS
- ⊙ WIDE RANGE OF LENGTHS, MANUFACTURED TO MEET INDIVIDUAL NEEDS
- ⊙ PLUG AND PLAY



HDPE ROLLERS



| EU-ROLLER product matrix | Product design ID | | | |
|---|-------------------|------------|--------|-----------|
| Outer diameter (mm/inch) | D | 89/3,5" | 102/4" | 108/4,25" |
| STANDARD sealing system | STD | x | x | x |
| ANTI-SIEZE sealing system (dust protection) | ASE | | | |
| Roller length (mm) | FL | 150 - 1750 | | |
| HDPE standard | HDPN | x | x | x |
| HDPE smooth | HDPS | x | x | x |
| HDPE wall thickness (mm) | TP | 9,5 | 6,55 | 9,55 |
| Wall thickness of the inner steel tube (mm) | TM | 2 | 2 | 2 |
| Yellow | ROLLER | x | x | x |
| Green | ANTI-ROLL BACK | | | |
| Red | future | | | |
| Blue | future | | | |
| 20 mm shaft | d | x | x | x |
| 25 mm shaft | | x | x | x |
| 30 mm shaft | | | | |
| 40 mm shaft | | | | |
| 50 mm shaft | | | | |
| Shaft material E295 | ST | x | x | x |
| Shaft material AISI 304 | SS304 | x | x | x |
| Shaft material AISI 316 | SS316 | x | x | x |
| Round | RO | x | x | x |
| Open end | OE | x | x | x |
| Closed end | CE | x | x | x |
| Drilled | GAR | x | x | x |
| Drilled open end | GAROE | x | x | x |
| Adapter metal | ASHEX | x | x | x |
| Adapter plastic open | APOE | x | x | x |
| Internal thread metric | THI | x | x | x |
| External thread metric | THO | x | x | x |
| Customer design | VE | x | x | x |
| LFD bearing open | BO | x | x | x |
| LFD bearing closed | BC | x | x | x |
| LFD bearing stainless steel | BSS | x | x | x |
| Bearing house | BHDPE | | | |
| 6304 TNGHC4 /d20mm | | x | x | x |
| 6205 TNGHC4 / d25mm | | x | x | x |
| 6305 TNGHC4 /d25mm | | | | |
| 6306 TNGHC4 /d30mm | | | | |
| 6308 TNGHC4 / d40mm | | | | |
| 6310 TNGHC4 /d50mm | | | | |



HDPE ROLLER

Roller properties

| 114/4,5" | 127/5" | 133/5,25" | 152/6" | 152/6" | 159/6,25" | 159/6,25" | 178/7" | 178/7" | 194/7,62" |
|----------|----------|-----------|----------|--------|-----------|-----------|--------|--------|-----------|
| X | X | X | X | X | X | X | X | X | X |
| | X | X | X | | X | | X | X | X |
| | 180-1750 | | 230-1750 | | | | | | |

Roller surface

| | | | | | | | | | |
|-----|------|------|-------|------|-------|----|-------|-------|-------|
| X | X | X | X | X | X | X | X | X | X |
| X | X | X | X | X | X | X | X | X | X |
| 6,2 | 12,7 | 15,7 | 18,85 | 12,5 | 22,35 | 16 | 31,85 | 19,15 | 27,15 |
| 2 | 2 | 2 | 2 | 3 | 2 | 3 | 2 | 3 | 3 |

Roller colour markings

| | | | | | | | | | |
|---|---|---|---|---|---|---|---|---|---|
| X | X | X | X | X | X | X | X | X | X |
| | | | | | | | | | |
| | | | | | | | | | |

Shaft properties

| | | | | | | | | | |
|---|---|---|---|---|---|---|---|---|---|
| X | X | X | | | | | | | |
| X | X | X | X | | X | | X | | |
| | | | X | | X | | X | | |
| | | | | X | | X | | X | X |
| | | | | | | | | X | X |
| X | X | X | X | X | X | X | X | X | X |
| X | X | X | X | X | X | X | X | X | X |
| X | X | X | X | X | X | X | X | X | X |

Shaft end design

| | | | | | | | | | |
|---|---|---|---|---|---|---|---|---|---|
| X | X | X | X | X | X | X | X | X | X |
| X | X | X | X | X | X | X | X | X | X |
| X | X | X | X | X | X | X | X | X | X |
| X | X | X | X | X | X | X | X | X | X |
| X | X | X | X | X | X | X | X | X | X |
| X | X | X | X | X | X | X | X | X | X |
| X | X | X | | | | | X | | |
| X | X | X | X | X | X | X | X | X | X |
| X | X | X | X | X | X | X | X | X | X |
| X | X | X | X | X | X | X | X | X | X |

Bearing options

| | | | | | | | | | |
|---|---|---|---|---|---|---|---|---|---|
| X | X | X | X | X | X | X | X | X | X |
| X | X | X | X | X | X | X | X | X | X |
| X | X | X | X | X | X | X | X | X | X |

HDPE

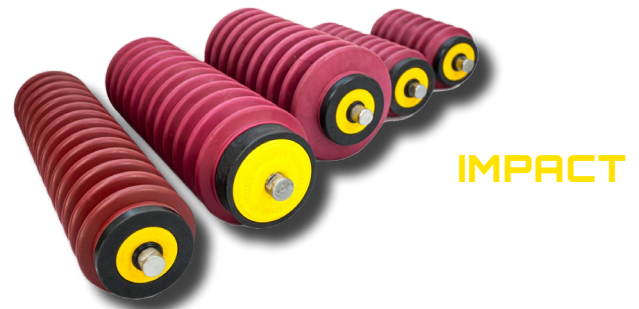
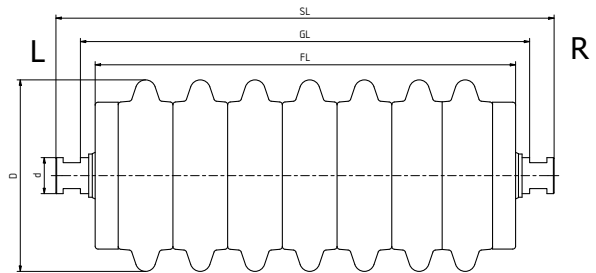
Bearing sizes

| | | | | | | | | | |
|---|---|---|---|---|---|---|---|---|---|
| X | X | X | | | | | | | |
| X | X | X | X | | X | | X | | |
| | X | X | | | | | | | |
| | | | X | | X | | X | | |
| | | | | X | | X | | X | X |
| | | | | | | | | X | X |

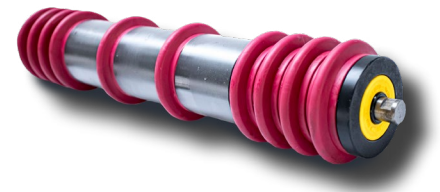
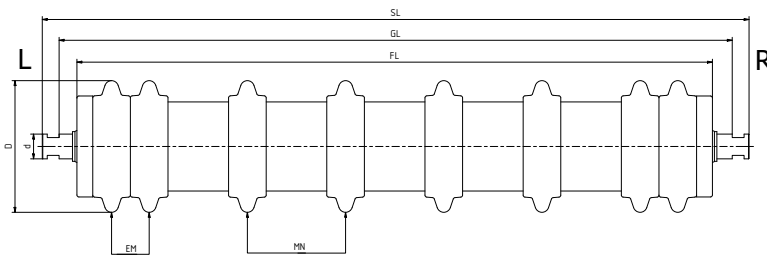


IMPACT & PICKING-IDLER Rollers

IMPACT AND PICKING-IDLER RETURN ROLLERS ARE ENGINEERED TO ABSORB THE FORCE OF CONVEYOR BELTS. THIS LINEUP OF ROLLERS INTEGRATES A TESTED SEALING ARRANGEMENT AND PATENTED HIGH-DENSITY POLYETHYLENE (HDPE) BEARING AND SEAL HOUSING, ENSURING ROBUSTNESS AND LONGEVITY IN DEMANDING CONVEYOR SYSTEMS.



PICKING-IDLER



INNOVATIVE PATENTED TECHNOLOGIES

Our high-impact Bearing and Seal Housing, protected under the Patent of EU-Roller's innovation. This patented housing, injection-molded from high-impact HDPE, ensures precision and eliminates the risks of misalignment and distortion. Its innovative design enables it to absorb the impact caused by uneven loads and varying belt speeds effectively.

COST-EFFECTIVE AND DURABLE

EU-Roller's Impact and Picking-Idler Return Rollers are crafted with top-quality materials and employ cutting-edge technologies, adhering to stringent manufacturing standards for optimal performance. These rollers are equipped with a series of ELASTOMER rings of sufficient thickness and resilience to absorb the impact of large material volumes loaded onto the line of conveyor belt. By utilizing EU-Roller's pioneering, patented HDPE Bearing and Seal Housing, our Impact and Picking-Idler Rollers mitigate the undesirable traits associated with steel bearing housings, thereby prolonging the lifespan of both the bearings and the roller itself.

IMPACT & PICKING-IDLER Rollers

DUST PROTECTION

IMPACT & PICKING -IDLER Rollers are highly resistant to abrasion and ultraviolet rays. The patented Sealing Arrangement by EU-ROLLER enables these rollers to withstand the most severe weather conditions and moisture-rich environments.

ROLLER SURFACE

IMPACT & PICKING Rollers are offered with an ELASTOMER rings surface option. The hardness of the ELASTOMER rings is 80 SHORE A.

OUR HIGH – SPEC LUBRICANT MEETS ALL REQUIREMENTS

- CONTAINS ANTI-RUST AND ANTI-OXIDANT ADDITIVES
- EXCELLENT WATER-REPELLENT PROPERTIES
- MECHANICALLY STABLE
- HIGH-TEMPERATURE PERFORMANCE, OPERATING FROM BELOW -30°C TO +160°C
- PERFORMS WELL IN HARSH WEATHER AND EXTREME CONDITIONS

KEY BENEFITS

- ⊙ REDUCED NOISE LEVELS
- ⊙ ABSORBS THE IMPACT OF LOADS FALLING ONTO THE BELT
- ⊙ MINIMIZES BELT DAMAGE (NO PIZZA EFFECT)
- ⊙ PREVENTS BEARING MISALIGNMENT
- ⊙ INCORPORATES THE MOST EFFECTIVE BEARING PROTECTION AND SEALING ARRANGEMENT AVAILABLE IN THE CONVEYOR INDUSTRY
- ⊙ EXTENDS BEARING LIFESPAN
- ⊙ RECYCLABLE
- ⊙ BEARING HOUSING PREVENTS DAMAGE TO THE CONVEYOR BELT
- ⊙ IN CASE OF BEARING FAILURE OR ROLLER STOPPAGE
- ⊙ DECREASES MAINTENANCE EXPENSES
- ⊙ COMPETITIVE PRICING, REDUCING TOTAL COST OF OWNERSHIP
- ⊙ PERFORMS EFFECTIVELY IN HARSH WEATHER AND EXTREME CONDITIONS
- ⊙ PLUG AND PLAY

APPLICATIONS

- ⊙ MINES
- ⊙ QUARRIES
- ⊙ COAL-FIRED POWER PLANTS



IMPACT & PICKING-IDLER Rollers

IMPACT



PICKING-IDLER



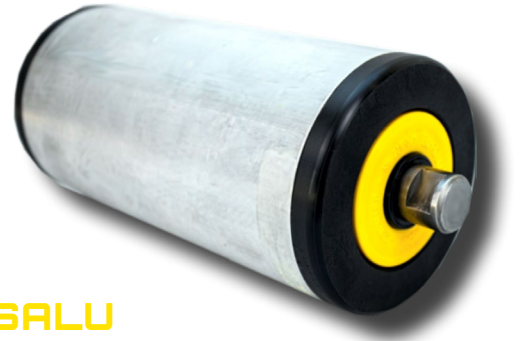
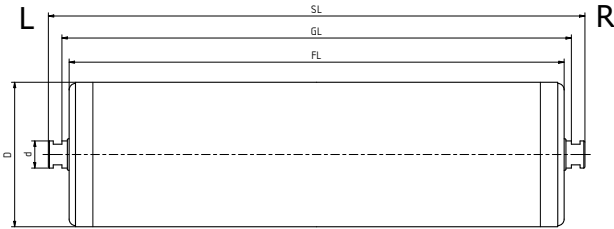
| EU-ROLLER product matrix | Product design ID |
|---|-------------------|
| Outer diameter (mm/inch) | D |
| STANDARD sealing system | STD |
| ANTI-SIEZE sealing system (dust protection) | ASE |
| IMPACT Roller length (mm) | FL |
| PICKING Roller length (mm) | FL |
| Elastomer | ELAS |
| Wall thickness of the rubber ring (mm) | TP |
| Wall thickness of the inner aluminium tube (mm) | TM |
| Yellow | ROLLER |
| Green | ANTI-ROLL BACK |
| Red | future |
| Blue | future |
| 20 mm shaft | d |
| 25 mm shaft | |
| 30 mm shaft | |
| Shaft material E295 | ST |
| Shaft material AISI 304 | SS304 |
| Shaft material AISI 316 | SS316 |
| Round | RO |
| Open end | OE |
| Closed end | CE |
| Drilled | GAR |
| Drilled open end | GAROE |
| Adapter metal | ASHEX |
| Adapter plastic open | APOE |
| Internal thread metric | THI |
| External thread metric | THO |
| Customer design | VE |
| LFD bearing open | BO |
| LFD bearing closed | BC |
| LFD bearing stainless steel | BSS |
| Bearing house | BHDPE |
| 6304 TNGHC4 / d20mm | |
| 6205 TNGHC4 / d25mm | |
| 6305 TNGHC4 / d25mm | |
| 6306 TNGHC4 / d30mm | |



| IMPACT / PICKING-IDLER | | | | |
|------------------------|---------|-----------|----------|-----------|
| Roller properties | | | | |
| 114/4,5" | 127/5" | 133/5,25" | 160/6,3" | 180/7,09" |
| x | x | x | x | x |
| | | x | x | x |
| 250-570 | 250-730 | | | |
| 500 - 1764 | | | | |
| Roller surface | | | | |
| x | x | x | x | x |
| 18,5 | 25 | 24 | 25 | 32,5 |
| 4 | 4 | 6 | 6 | 6 |
| Roller colour markings | | | | |
| x | x | x | x | x |
| | | | | |
| | | | | |
| Shaft properties | | | | |
| x | x | x | | |
| x | x | x | x | x |
| | | | x | x |
| x | x | x | x | x |
| x | x | x | x | x |
| x | x | x | x | x |
| Shaft end design | | | | |
| x | x | x | x | x |
| x | x | x | x | x |
| x | x | x | x | x |
| x | x | x | x | x |
| x | x | x | x | x |
| x | x | x | x | x |
| x | x | x | | |
| x | x | x | x | x |
| x | x | x | x | x |
| Bearing options | | | | |
| x | x | x | x | x |
| x | x | x | x | x |
| x | x | x | x | x |
| HDPE | | | | |
| Bearing sizes | | | | |
| x | x | x | | |
| x | x | x | x | x |
| | | x | | |
| | | | x | x |



PLASTEEL - PLASALU Rollers



PLASTEEL - PLASALU

EASY ROLLING, LONGER-LASTING ROLLERS

EU-Roller's innovative, designed Steel and Aluminium Rollers are engineered to ensure precise bearing alignment, resulting in smoother rolling, increased efficiency, and reduced noise pollution. These steel and Aluminium rollers, designed to minimize friction, are durable, environmentally friendly, and offer exceptional benefits not previously available in traditional steel rollers.

COST-EFFECTIVE AND DURABLE

The EU-Roller Steel and Aluminium Roller integrates proven technology with cutting-edge innovation to provide superior bearing alignment, smoother rolling, enhanced energy efficiency, and additional protection. These rollers meet the demand for cost-effective, efficient, and long-lasting solutions. The bearing housings are mechanically fixed preventing distortion and ensuring more accurate alignment. Improved bearing alignment reduces operational stress and increases bearing lifespan. The easier-rolling bearings of the EU-Roller Steel and Aluminium Roller generate less friction and noise.

INNOVATIVE TECHNOLOGIES

Mechanically Fixed Bearing Housing designed in the latest generation of EU-Roller Steel and Aluminium Rollers, the bearing housings are mechanically fixed ensuring optimal bearing alignment for a more efficient and durable roller.

Cushioned Bearing Carriers: EU-Roller's cushioned bearing carrier, made from high-quality nylon, provides vibration shock protection at the roller's most critical component – the bearing. This feature enhances impact resistance and protects the bearing from vibration and prevents the roller failure.

APPLICATIONS

- ⊙ MINES
- ⊙ QUARRIES
- ⊙ CEMENT PLANTS
- ⊙ COAL-FIRED POWER PLANTS
- ⊙ DOCK INSTALLATIONS
- ⊙ WASTE RECYCLING

PLASTEEL - PLASALU Rollers

DUST PROTECTION

PLASTEEL and PLASALU Rollers are constructed from mild steel and Aluminium conveyor tubing to ensure maximum strength. EU-Roller's innovative labyrinth seal design and flinger provide reduced rolling resistance while offering enhanced protection in harsh operating conditions.

ROLLER SURFACE OPTIONS

PLASTEEL Rollers are available with NATUR and PAINTED surfaces.

PLASALU Rollers are available with a NATUR surface.

OUR HIGH - SPEC LUBRICANT MEETS ALL REQUIREMENTS

- CONTAINS ANTI-RUST AND ANTI-OXIDANT ADDITIVES
- EXCELLENT WATER-REPELLENT PROPERTIES
- MECHANICALLY STABLE
- HIGH-TEMPERATURE PERFORMANCE, OPERATING FROM BELOW -30°C TO +160°C
- PERFORMS WELL IN HARSH WEATHER AND EXTREME CONDITIONS

KEY BENEFITS

- ⊙ REVOLUTIONARY DESIGN CONCEPT FOR STEEL AND ALUMINIUM ROLLERS
- ⊙ LOWER NOISE LEVELS
- ⊙ EXTENDED LIFESPAN COMPARED TO CONVENTIONAL STEEL ROLLERS
- ⊙ EU-ROLLER DESIGN ELIMINATES BEARING MISALIGNMENT, ENSURING SMOOTHER ROLLING
- ⊙ CAPABLE OF OPERATING AT HIGHER SPEEDS
- ⊙ ENHANCES BEARING LIFESPAN
- ⊙ REDUCES MAINTENANCE COSTS
- ⊙ RECYCLABLE
- ⊙ COMPETITIVE PRICING OFFERING A BETTER RETURN ON INVESTMENT
- ⊙ PERFORMS WELL IN HARSH WEATHER AND EXTREME CONDITIONS
- ⊙ PLUG AND PLAY



PLASTEEL - PLASALU ROLLERS

PLASTEEL



PLASALU



| EU-ROLLER product matrix | Product design ID |
|---|-------------------|
| Outer diameter (mm/inch) | D |
| STANDARD sealing system | STD |
| ANTI-SIEZE sealing system (dust protection) | ASE |
| Roller length (mm) | FL |
| HDPE standard | HPDN |
| HDPE smooth | HDPS |
| Elastomer | ELAS |
| Natur | NATU |
| Painted | PAIN |
| Yellow | ROLLER |
| Green | ANTI-ROLL BACK |
| Red | future |
| Blue | future |
| 20 mm shaft | d |
| 25 mm shaft | |
| 30 mm shaft | |
| 40 mm shaft | |
| 50 mm shaft | |
| Shaft material E295 | ST |
| Shaft material AISI 304 | SS304 |
| Shaft material AISI 316 | SS316 |
| Round | RO |
| Open end | OE |
| Closed end | CE |
| Drilled | GAR |
| Drilled open end | GAROE |
| Adapter metal | ASHEX |
| Adapter plastic open | APOE |
| Internal thread metric | THI |
| External thread metric | THO |
| Customer design | VE |
| LFD bearing open | BO |
| LFD bearing closed | BC |
| LFD bearing stainless steel | BSS |
| Bearing house | BHDPE |
| 6304 TNGHC4 /d20mm | |
| 6205 TNGHC4 / d25mm | |
| 6306 TNGHC4 /d30mm | |

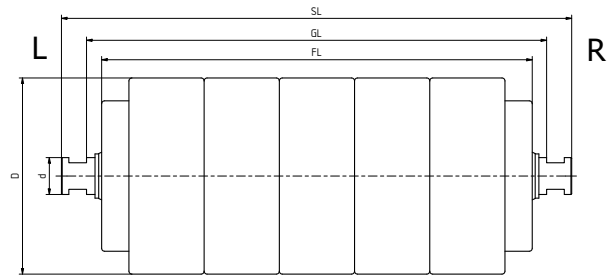


| PLASTEEL | | | | PLASALU | | | |
|-------------------------------|--------|-----------|----------|-----------|----------|----------|-----------|
| Roller properties | | | | | | | |
| 89/3,5" | 102/4" | 108/4,25" | 114/4,5" | 80/3,15" | 90/3,54" | 114/4,5" | 125/4,92" |
| X | X | X | X | X | X | X | X |
| 150 - 600 | | | | 150 - 600 | | | |
| Roller surface | | | | | | | |
| | | | | | | | |
| | | | | | | | |
| X | X | X | X | X | X | X | X |
| X | X | X | X | | | | |
| Roller colour markings | | | | | | | |
| X | X | X | X | X | X | X | X |
| | | | | | | | |
| | | | | | | | |
| Shaft properties | | | | | | | |
| X | X | | | X | X | | |
| X | X | X | X | X | X | X | X |
| | | X | X | | | X | X |
| | | | | | | | |
| X | X | X | X | X | X | X | X |
| X | X | X | X | X | X | X | X |
| X | X | X | X | X | X | X | X |
| Shaft end design | | | | | | | |
| X | X | X | X | X | X | X | X |
| X | X | X | X | X | X | X | X |
| X | X | X | X | X | X | X | X |
| X | X | X | X | X | X | X | X |
| X | X | X | X | X | X | X | X |
| X | X | X | X | X | X | X | X |
| X | X | X | X | X | X | X | X |
| X | X | X | X | X | X | X | X |
| X | X | X | X | X | X | X | X |
| X | X | X | X | X | X | X | X |
| Bearing options | | | | | | | |
| X | X | X | X | X | X | X | X |
| X | X | X | X | X | X | X | X |
| X | X | X | X | X | X | X | X |
| HDPE | | | | | | | |
| Bearing sizes | | | | | | | |
| X | X | | | X | X | | |
| X | X | X | X | X | X | X | X |
| | | X | X | | | X | X |



RUBBER DISC Rollers

RUBBER DISC IDLERS OPERATE BY UTILIZING DURABLE RUBBER DISCS SPACED AT REGULAR INTERVALS ALONG THE ROLLER. THESE DISCS EFFECTIVELY ELIMINATE CONVEYOR BELT CARRY-BACK BUILDUP BY BREAKING UP MATERIAL ON THE RETURN SIDE OF THE BELT, WHICH TYPICALLY ACCUMULATES IN THE CENTER. THE DISCS ARE CLUSTERED AT BOTH ENDS OF THE ROLLER TO SUPPORT AND PROTECT THE BELT EDGES.



RUBBER DISC

DURABILITY AND RELIABILITY

DURABLE AND RELIABLE CONVEYOR ROLLERS FOR WEAR ISSUES

- Rubber discs prevent material buildup on the roller surface, which can cause irregular wear and shape changes leading to belt mistracking
- Highly effective and simple maintenance solution for common belt conveyor problems

IDEAL APPLICATIONS

- Areas where return rollers are subjected to high carry-back volumes
- Environments with high shell wear on return rollers

COST EFFECTIVE AND DURABLE

EU-Roller's RUBBER DISC Return Rollers are crafted with top-quality materials and employ cutting-edge technologies, adhering to stringent manufacturing standards for optimal performance. These rollers are equipped with a series of ELASTOMER rings of sufficient thickness and resilience to absorb the impact of large material volumes falling onto the conveyor. By utilizing EU-Roller's pioneering, patented HDPE Bearing and Seal Housing, our RUBBER DISC Rollers mitigate the undesirable traits associated with steel bearing housings, thereby prolonging the lifespan of both the bearings and the roller itself.

INNOVATIVE PATENTED TECHNOLOGIES

Our high-impact Bearing and Seal Housing, protected under Patented is a hallmark of EU-Roller's innovation. This patented housing, injection-molded from high-impact HDPE, ensures precision and eliminates the risks of misalignment and distortion. Its innovative design enables it to absorb the impact caused by uneven loads and varying belt speeds effectively.

RUBBER DISC Rollers

DUST PROTECTION

RUBBER DISC Rollers are highly resistant to abrasion and ultraviolet rays. The patented Sealing Arrangement by EU-ROLLER enables these rollers to withstand the most severe weather conditions and moisture-rich environments.

APPLICATIONS

- ⊙ MINES
- ⊙ QUARRIES
- ⊙ COAL-FIRED POWER PLANTS

ROLLER SURFACE OPTIONS

RUBBER DISC Rollers are offered with an ELASTOMER disc surface option. The hardness of the ELASTOMER rings is 80 SHORE A.

OUR HIGH – SPEC LUBRICANT MEETS ALL REQUIREMENTS

- CONTAINS ANTI-RUST AND ANTI-OXIDANT ADDITIVES
- EXCELLENT WATER-REPELLENT PROPERTIES
- MECHANICALLY STABLE
- HIGH-TEMPERATURE PERFORMANCE, OPERATING FROM BELOW -30°C TO +160°C
- PERFORMS WELL IN HARSH WEATHER AND EXTREME CONDITIONS

KEY BENEFITS

- ⊙ REDUCED NOISE LEVELS
- ⊙ ABSORBS THE IMPACT OF LOADS FALLING ONTO THE BELT
- ⊙ MINIMIZES BELT DAMAGE (NO PIZZA EFFECT)
- ⊙ PREVENTS BEARING MISALIGNMENT
- ⊙ INCORPORATES THE MOST EFFECTIVE BEARING PROTECTION AND SEALING ARRANGEMENT AVAILABLE IN THE CONVEYOR INDUSTRY
- ⊙ EXTENDS BEARING LIFESPAN
- ⊙ RECYCLABLE
- ⊙ BEARING HOUSING PREVENTS DAMAGE TO THE CONVEYOR BELT IN CASE OF BEARING FAILURE OR ROLLER STOPPAGE
- ⊙ DECREASES MAINTENANCE EXPENSES
- ⊙ COMPETITIVE PRICING, REDUCING TOTAL COST OF OWNERSHIP
- ⊙ PERFORMS EFFECTIVELY IN HARSH WEATHER AND EXTREME CONDITIONS
- ⊙ PLUG AND PLAY



RUBBER DISC ROLLERS



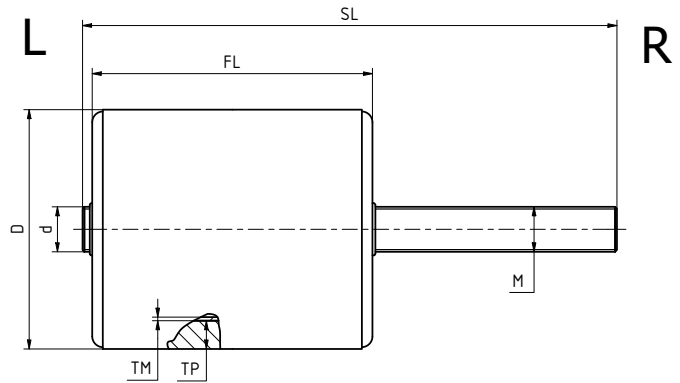
| EU-ROLLER product matrix | Product design ID | Rubber disc |
|---|-------------------|-------------|
| Roller properties | | |
| Outer diameter (mm/inch) | D | 133/5,25" |
| STANDARD sealing system | STD | x |
| ANTI-SIEZE sealing system (dust protection) | ASE | x |
| Roller length (mm) | FL | 500 - 1764 |
| Roller surface | | |
| Elastomer | ELAS | x |
| Wall thickness of the rubber ring (mm) | TP | 24 |
| Wall thickness of the inner aluminium tube (mm) | TM | 6 |
| Roller colour markings | | |
| Yellow | ROLLER | x |
| Green | ANTI-ROLL BACK | |
| Red | future | |
| Blue | future | |
| Shaft properties | | |
| 20 mm shaft | d | x |
| 25 mm shaft | | x |
| 30 mm shaft | | |
| 40 mm shaft | | |
| 50 mm shaft | | |
| Shaft material E295 | ST | x |
| Shaft material AISI 304 | SS304 | x |
| Shaft material AISI 316 | SS316 | x |
| Shaft end design | | |
| Round | RO | x |
| Open end | OE | x |
| Closed end | CE | x |
| Drilled | GAR | x |
| Drilled open end | GAROE | x |
| Adapter metal | ASHEX | x |
| Adapter plastic open | APOE | x |
| Internal thread metric | THI | x |
| External thread metric | THO | x |
| Customer design | VE | x |
| Bearing options | | |
| LFD bearing open | BO | x |
| LFD bearing closed | BC | x |
| LFD bearing stainless steel | BSS | x |
| Bearing house | BHDPE | HDPE |
| Bearing sizes | | |
| 6304 TNGHC4 / d20mm | | x |
| 6305 TNGHC4 / d25mm | | x |



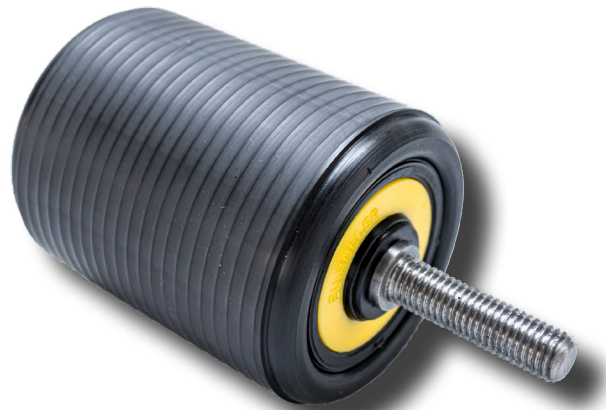


HDPE Side-Guide Rollers

FOR VARIOUS REASONS, THE CONVEYOR BELT MAY OCCASIONALLY DRIFT SIDE TO SIDE. IN SUCH INSTANCES, VERTICAL EU-ROLLER-GUIDE ROLLERS WITH THREADED-SHAFT ENDS, COMMONLY REFERRED TO AS BELT GUIDE ROLLERS, CAN BE USED. THEREFORE, IT IS RECOMMENDED TO ALWAYS USE GUIDE ROLLERS ON THE MOST SUITABLE TRANSOM, THE SELF-CENTRALIZING TRANSOM, WHICH AUTOMATICALLY ROTATES WHENEVER THE BELT DEVIATES FROM THE CENTER OF THE CONVEYOR-LINE, THE GUIDE ROLLERS HELP THE RUNNING OF THE BELT PARALLEL TO THE CENTER OF THE CONVEYOR-FRAME.



HDPE SIDE-GUIDE ROLLER



UNMATCHED PERFORMANCE

EU-Roller-Guide Rollers are engineered to perform in extreme temperatures, harsh environments, and highly corrosive, chemical, or coastal conditions that typically cause damage. The roller's main body is HDPE and steel-tube support. Entirely known for its exceptional resistance to abrasion and sun exposure, fire retardant properties, low friction coefficient, ability to absorb high impact forces, excellent gripping capabilities, and high melting point.

APPLICATIONS

- ⊙ MINES
- ⊙ QUARRIES
- ⊙ CEMENT PLANTS
- ⊙ COAL-FIRED POWER PLANTS
- ⊙ DOCK INSTALLATIONS
- ⊙ WASTE RECYCLING

HDPE Side-Guide Rollers

ROLLER SURFACE OPTIONS

STANDARD SURFACE:
Machined surface with micro ribs.

OPTIONS FOR DUST PROTECTION

HDPE Rollers offer excellent resistance to abrasion and ultraviolet rays.

OUR HIGH – SPEC LUBRICANT MEETS ALL REQUIREMENTS

- CONTAINS ANTI-RUST AND ANTI-OXIDANT ADDITIVES
- EXCELLENT WATER-REPELLENT PROPERTIES
- MECHANICALLY STABLE
- HIGH-TEMPERATURE PERFORMANCE, OPERATING FROM BELOW -30°C TO +160°C

KEY BENEFITS

- ⦿ NON-CORROSIVE
- ⦿ EXCELLENT ABRASION RESISTANCE
- ⦿ EXTENDED LIFESPAN
- ⦿ SUITABLE FOR NEARLY ANY APPLICATION WHERE STEEL ROLLERS ARE USED
- ⦿ RECYCLABLE
- ⦿ MINIMIZES DAMAGE TO CONVEYOR BELTS
- ⦿ ENERGY EFFICIENT
- ⦿ WATERTIGHT SEALING ARRANGEMENT
- ⦿ PROLONGS THE LIFESPAN OF BEARINGS
- ⦿ COMPETITIVELY PRICED
- ⦿ REDUCES TOTAL COST OF OWNERSHIP
- ⦿ PLUG AND PLAY



HDPE SIDE-GUIDE ROLLERS

| EU-ROLLER product matrix | Product design ID | HDPE side-guide roller | | | | |
|---|-------------------|------------------------|--------|---------|--------|--------|
| Roller properties | | | | | | |
| Outer diameter (mm/inch) | D | 89/3,5" | 102/4" | 127/5" | 152/6" | 152/6" |
| STANDARD sealing system | STD | x | x | x | x | x |
| ANTI-SIEZE sealing system (dust protection) | ASE | | | | | |
| Roller length (mm) | FL | 150 - 350 | | 180-350 | | |
| Roller surface | | | | | | |
| HDPE standard | HPDN | x | x | x | x | x |
| HDPE smooth | HDPS | x | x | x | x | x |
| HDPE wall thickness (mm) | TP | 9,5 | 6,55 | 12,7 | 18,85 | 12,5 |
| Wall thickness of the inner steel tube (mm) | TM | 2 | 2 | 2 | 2 | 3 |
| Roller colour markings | | | | | | |
| Yellow | ROLLER | x | x | x | x | x |
| Red | future | | | | | |
| Shaft properties | | | | | | |
| 20 mm shaft | d | x | x | x | | |
| 25 mm shaft | | | | x | x | |
| 30 mm shaft | | | | | x | |
| 40 mm shaft | | | | | | x |
| Shaft material E295 | ST | x | x | x | x | x |
| Shaft material AISI 304 | SS304 | x | x | x | x | x |
| Shaft material AISI 316 | SS316 | x | x | x | x | x |
| Shaft end design | | | | | | |
| Round | RO | x | x | x | x | x |
| External thread metric (M10) | THOM10 | x | x | x | | |
| External thread metric (M12) | THOM12 | x | x | x | | |
| External thread metric (M16) | THOM16 | x | x | x | x | x |
| External thread metric (M20) | THOM20 | | | x | x | x |
| External thread metric (M24) | THOM24 | | | x | x | x |
| External thread metric (M32) | THOM32 | | | | | x |
| Customer design | VE | x | x | x | x | x |
| Bearing options | | | | | | |
| LFD bearing closed | BC | x | x | x | x | x |
| LFD bearing stainless steel | BSS | x | x | x | x | x |
| Bearing house | BHDPE | HDPE | | | | |
| Bearing sizes | | | | | | |
| 6304 TNGHC4 / d20mm | | x | x | | | |
| 6205 TNGHC4 / d25mm | | x | x | x | x | |
| 6305 TNGHC4 / d25mm | | | | x | | |
| 6306 TNGHC4 / d30mm | | | | | x | |
| 6308 TNGHC4 / d40mm | | | | | | x |





Shaft materials and shaft ends

ALL ROLLERS CAN BE ORDERED WITH ANY OF THE FOLLOWING SHAFT ENDS.

UNIQUE SHAFT ENDS ARE ALSO AVAILABLE TO ORDER.

E295

For our standard rollers, the shafts are made from E295 bright mild steel/ quality round steel.

Roller-shafts made from E295 bright mild steel are typically used in industrial applications where strength and durability are essential.

APPLICATIONS

- ⊙ MINING AND QUARRYING
- ⊙ CONSTRUCTION
- ⊙ MANUFACTURING
- ⊙ BULK MATERIAL HANDLING
- ⊙ LOGISTICS AND WAREHOUSING
- ⊙ PORTS AND SHIPPING

AISI 304 AND AISI 316

Upon special request, the roller shafts can also be manufactured from AISI 304 stainless steel and AISI 316 acid-resistant and stainless steel.

Roller-shafts made from AISI 304 and AISI 316 stainless steel are typically used in environments where corrosion resistance is crucial.

APPLICATIONS

- ⊙ FOOD AND BEVERAGE INDUSTRY
- ⊙ PHARMACEUTICAL INDUSTRY
- ⊙ CHEMICAL INDUSTRY
- ⊙ MARINE APPLICATIONS
- ⊙ MEDICAL EQUIPMENT
- ⊙ OUTDOOR AND COASTAL STRUCTURES

PLASTIC ADAPTERS

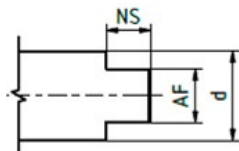
By using a plastic adapter, the vibrations transmitted from the rollers to the metal frame can be significantly reduced.

We recommend the use of this adapter for belt tracks where the noise generated is harmful to the environment.



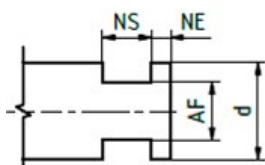
Shaft materials and shaft ends

OPEN END (OE)



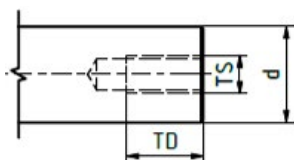
| d | NS | AF | AF |
|----|-------|-------|-------|
| 20 | 4-14 | 12-14 | 12-32 |
| 25 | 8-20 | 13-22 | |
| 30 | 8-20 | 16-22 | |
| 40 | 10-20 | 22-32 | |
| 50 | 10-20 | 22-32 | |

CLOSED END (CE)



| d | NS | AF | NE |
|----|-------|-------|------|
| 20 | 4-14 | 12-14 | 2-10 |
| 25 | 10-16 | 13-25 | |
| 30 | 10-16 | 16-22 | |
| 40 | 10-16 | 22-32 | |
| 50 | 10-16 | 32 | |

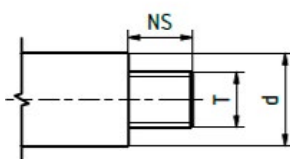
INTERNAL THREAD METRIC (THI)



| d | TS | TD |
|----|---------|----|
| 20 | M8-M10 | 20 |
| 25 | M8-M10 | 20 |
| 30 | M20 | 40 |
| 40 | M20-M24 | 40 |
| 50 | M24-M32 | 50 |

The TD is a unique size, and it tends to vary

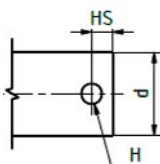
EXTERNAL THREAD METRIC (THO)



| d | NS | T |
|----|----|---------|
| 20 | 25 | M14-M16 |
| 25 | 25 | M14-M16 |
| 30 | 35 | M20 |
| 40 | 45 | M32-M36 |
| 50 | 55 | M36-M40 |

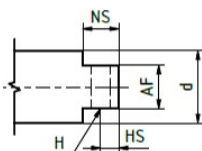
The NS varies based on individual customer requirements

DRILLED (GAR)



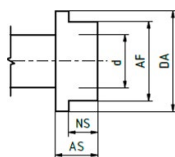
| d | HS | H |
|----|----|---------------|
| 20 | 8 | 8,8,5,12 |
| 25 | 12 | 8,8,5,10,5,12 |
| 30 | 15 | 8,12,5,13 |
| 40 | 20 | 18,24 |
| 50 | 30 | 18,24 |

OPEN END DRILLED (GAROE)



| d | NS | AF | H | HS |
|----|-------|-------|---------------|----|
| 20 | 4-14 | 12-14 | 8,8,5,12 | 8 |
| 25 | 8-20 | 13-22 | 8,8,5,10,5,12 | 12 |
| 30 | 8-20 | 16-22 | 8,12,5,13 | 15 |
| 40 | 10-20 | 22-32 | 18,24 | 20 |
| 50 | 10-20 | 22-32 | 18,24 | 30 |

ADAPTER PLASTIC OPEN (APOE)



| Type | d | NS | AS | AF | DA |
|------------|----|----|----|----|----|
| APOE201419 | 20 | 14 | 19 | 30 | 38 |
| APOE201116 | 20 | 11 | 16 | 30 | 38 |
| APOE251826 | 25 | 18 | 26 | 45 | 55 |

CUSTOM SHAFT END (VE)

We manufacture the shaft end based on the technical drawing provided by the customer.





SEALING

SEALING ARRANGEMENT



The following is a quote from C.E.M.A Standard No 502-1980:

„Idler life is determined by a combination of many factors such as seals, bearings, shell thickness, maintenance, environment and load density. While bearing life is often used as an indicator of idler life it must be recognised that the effect of other variables especially seal effectiveness may be more important in determining idler life than the bearings.“

Over the years many different types of seals were developed, some failing to perform their duties, others performing well, in specific conditions, but not one were versatile enough to perform in the host of various conditions to be found in the vastly differing situations in material handling and conveyable materials.

The requirements we envisaged were as follows:

The seal had to prevent the ingress of the following substances into the bearing:

- Water
- Fine Dust
- Any chemicals and/or acids
- Grit
- Slurry, mud

The seal would also have to be none-corrosive, have a very low co-efficient of friction and be resistant to chemicals, acid and wear.

After extensive research, testing and re-designing, we eventually reached our goal. Our patented sealing arrangement consisting of a back seal or grease retainer a shock resisting bearing cover and outer seal consisting of labyrinth and lip seals proved to be the most effective sealing arrangement available on the market to date.

Tests done by the end users proved the superiority of the EU-ROLLER sealing arrangement.

BEARING AND SEAL HOUSING

Another important factor which influences the lifespan of the bearing is the bearing housing. In conventional rollers the possibility of misalignment and distortion is ever present. We therefore opted for a high impact nylon bearing cover, which is injection moulded ensuring precision and which can due to the design and material used, absorb a large amount of the impact due to load and belt speed, which could otherwise be detrimental to the bearing.

The patent include the heat fusion process used to permanently attach the bearing housing to the roller shell to form a totally sealed and aligned roller drum which is then precision machined to a concentricity specification of 0,2 mm maximum eliminating any extra shock loads to the bearings due to vibrations formed by non concentric rollers, evident in conventional rollers.

BEARING LUBRICATION

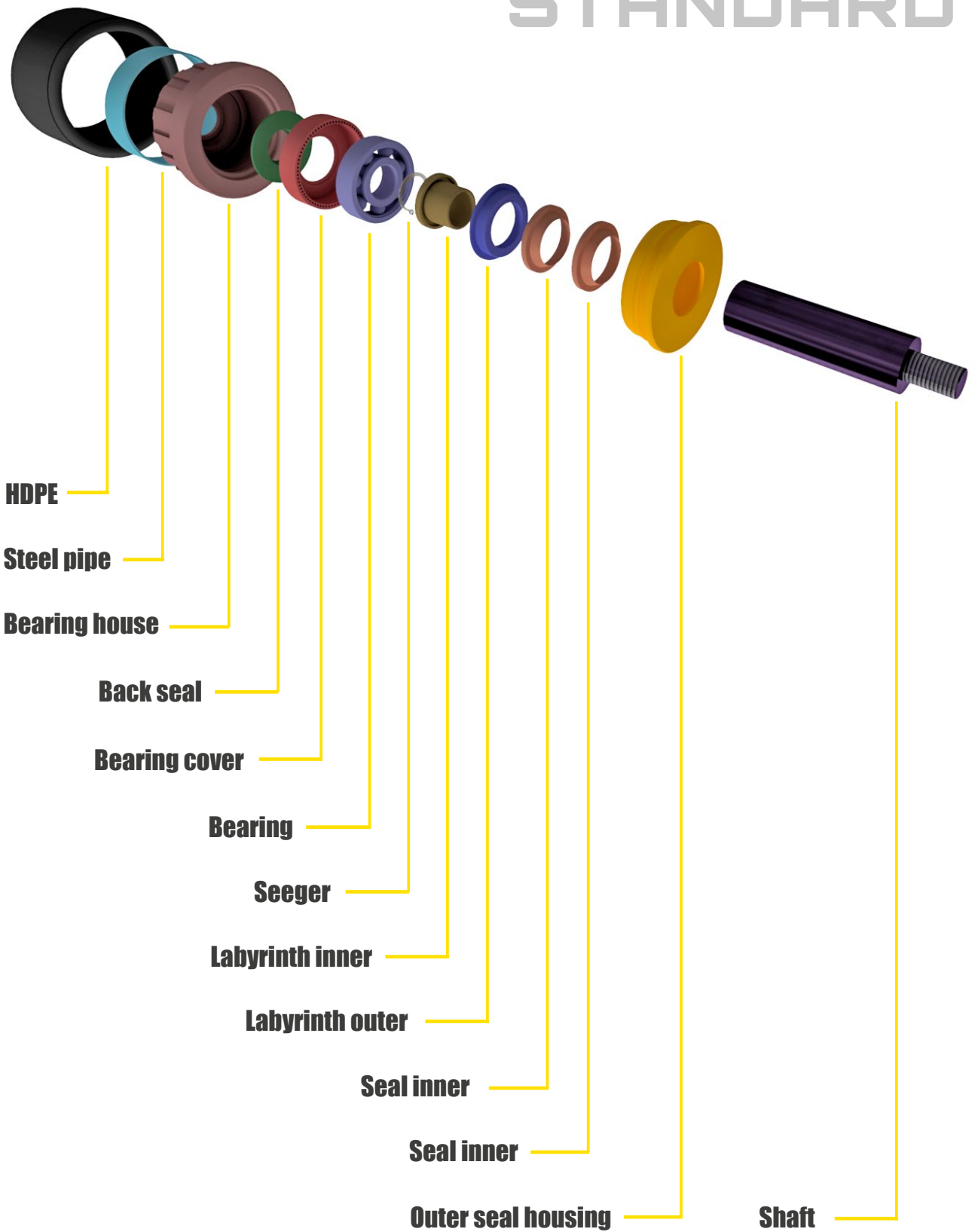
The synthetic base lubrication we use, was approved by the bearing manufacturer and selected on the following basis.

- Contains Anti-Rust Additives
- Contains Anti-Oxidant Additives
- Water Repellent-Exceptional heat and water resistant properties
- Mechanical Stability
- High Temperature Performance
- Operating Temperatures from below -30°C to +160°C By using a lubricant which conforms to the above specifications, we were assured that our rollers bearings would be well greased „for life“ and our product would perform as expected.



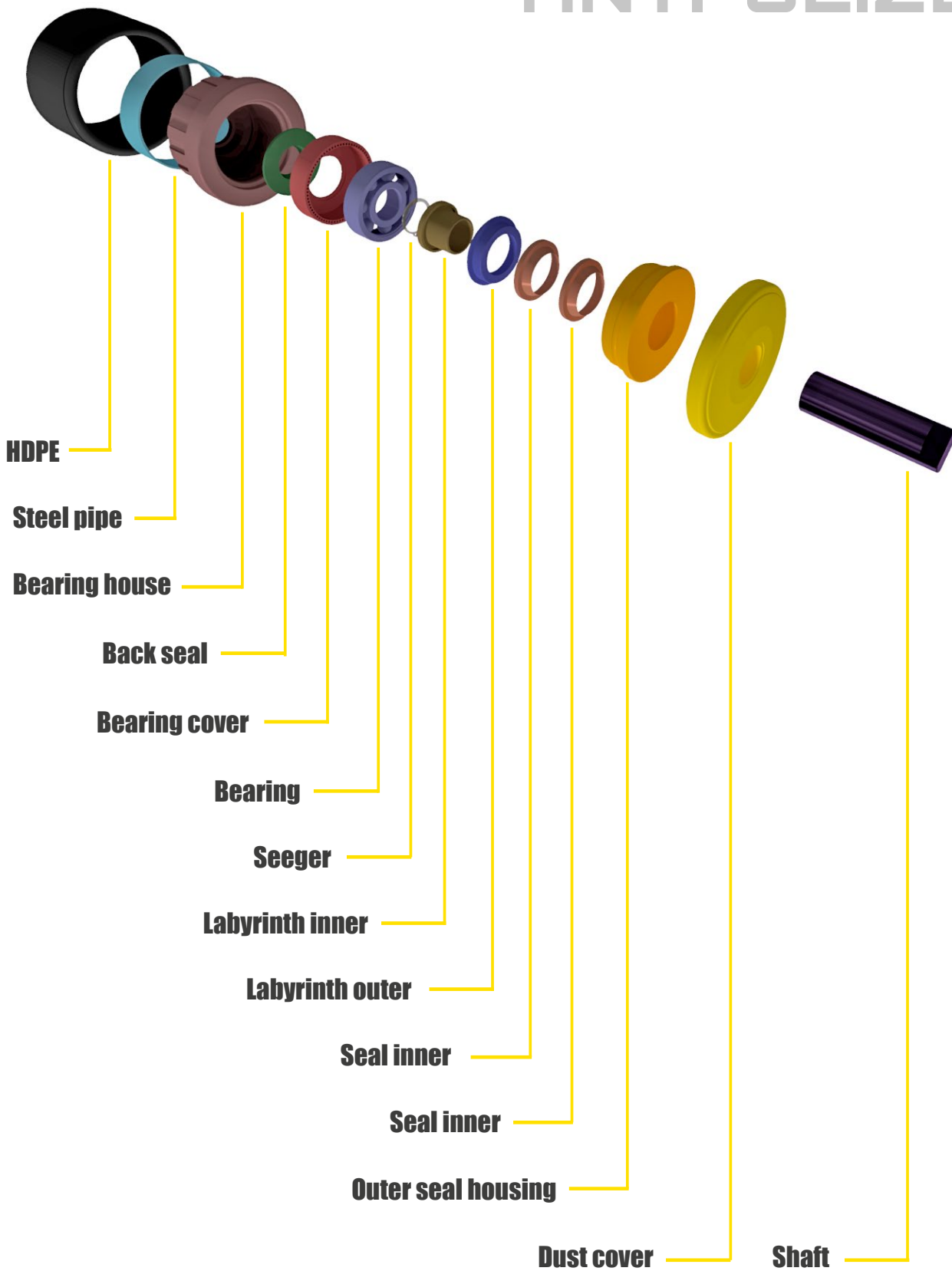
SEALING & BEARING system

STANDARD



SEALING & BEARING system

ANTI-SEIZE



ROLLER DESIGNER



DESIGN YOUR PERFECT ROLLER IN MINUTES – CUSTOMIZE NOW

With the design tool available on the **EU-ROLLER.com** website, compiling the technical specifications for rollers is faster than creating a hand-drawn sketch with dimensions.

THERE'S NO NEED TO SCAN OR SEND THE HAND-DRAWN DOCUMENT SEPARATELY BY EMAIL.

NO NEED FOR MANUAL DESIGN

With the ROLLER DESIGNER tool, the roller design can be completed in less than a minute by following a pre-designed sequence, selecting options, and entering the required dimensions.

At the end it is sent to the email address registered by the user. By providing the JOBCARD identifier, the roller manufacturing plant can immediately identify the designed roller and provide feedback to the users, as well as offer technical assistance if needed. Based on the JOBCARD data, the order for the roller to be manufactured is confirmed by the manufacturer via email. After this, the user can sit back and relax, and after the rollers are produced, they will receive a confirmation of fulfillment from the manufacturer.






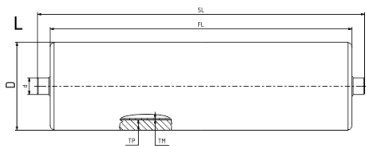











**YOU DESIGN IT,
WE'LL BRING IT TO LIFE...**




KEY BENEFITS

- ⦿ TAILORED PRODUCTS
- ⦿ INSTANT VISUALIZATION
- ⦿ QUICK QUOTES
- ⦿ MINIMIZED ERRORS
- ⦿ USER-FRIENDLY INTERFACE
- ⦿ SELF-SERVICE
- ⦿ 24/7 AVAILABILITY

IF YOU PREFER TO DESIGN ON PAPER USE THE DOWNLOADABLE JOBCARD

|   | | HDPE EU-Roller Jobcard Manual filling version. Please download from browser and send it on email. | | <i>The best choice</i> - for conveyor applications  - for mining industry | | | | | | |
|---|---|--|---|--|---|---|---|---|---|--|
| Customer: | | Job number (ID): | (from factory) | | | | | | | |
| Delivery options: | | Date: | | | | | | | | |
| Packaging options: | | Measure: | | | | | | | | |
| Sample request? | | 3D request? - file type: | | | | | | | | |
| Quantity: | | Product code: | (from factory) | | | | | | | |
| Calculated weight per piece: | (function under development) | Request type: | | | | | | | | |
| Calculated price per piece: | (function under development) | Notes: | | | | | | | | |
| Sealing options: | |  | Roller diameter "D" | | | | | | | |
| Surface options: | | | Shaft diameter "d" | | | | | | | |
| Bearing options: | | | Roller length "FL" | | | | | | | |
| Bearing type: | (from factory) | | Shaft end lengths sum (SL - FL) | | | | | | | |
| Bearing custom: | | | Shaft full length "SL" | | | | | | | |
| Shaft material: | | | | | | | | | | |
| Shaft end option ("L=R" shaft ends designs and datas are the same, "L<>R"= different shaft ends): L=R L<>R | | | | | | | | | | |
| Shaft end design images and codes: | | | | | | | | | | |
|  |  |  |  |  |  |  |  |  |  |  |
| Flatted open end factory default | Flatted closed end factory default | Round factory default | Drilled factory default | Drilled-flatted open | Adapter metal | Adapter plastic | Adapter plastic closed | Threaded in | Threaded out | Custom |
| Design (L): | | Shaft "HEX" - L: | | | Design (R): | | | | | |
| Shaft "NS" - L: | | Shaft "DA" - L: | | | Shaft "NS" - R: | | Shaft "HEX" - R: | | | This sheet is made in A3 size. Set the align to print area option before you print to a different size (be environmentally conscious and don't print unnecessarily. Send it on email if you can) |
| Shaft "AF" - L: | | Shaft "TD" - L: | | | Shaft "AF" - R: | | Shaft "DA" - R: | | | |
| Shaft "NE" - L: | | Shaft "TS" - L: | | | Shaft "NE" - R: | | Shaft "TD" - R: | | | |
| Shaft "H" - L: | | Shaft "T" - L: | | | Shaft "H" - R: | | Shaft "TS" - R: | | | |
| Shaft "HS" - L: | | | | | Shaft "HS" - R: | | Shaft "T" - R: | | | |
| Shaft "AS" - L: | | | | | Shaft "AS" - R: | | | | | |
| PRINT | | | | | | | | | | |
| HDPE METRIC JOBCARD - v.01 - 2024.06.06 - All rights reserved. EU-ROLLER.COM Please fill the form and send it to this email address: sales@eu-roller.com --- if you have any questions, call this number: +36 57 402 844 | | | | | | | | | | |

The JOBCARD has been updated. You can download the blank JOBCARD from the [EU-ROLLER.com\downloads](http://EU-ROLLER.com/downloads) page in two different PDF formats.

 **„JOBCARDS FORM FILL.PDF“** can be filled out using a computer or mobile phone and will be automatically sent to the manufacturer by clicking the EMAIL button.

 **„JOBCARD FORM MANUAL FILL.PDF“** should be printed and filled out by hand.

After filling in the data, the form should be scanned or photographed and sent to the manufacturer's email at SALES@EU-ROLLER.com.

WE WILL CONFIRM RECEIPT OF ALL SUBMITTED JOBCARDS VIA EMAIL. IF TECHNICAL CLARIFICATION IS NEEDED, A REPRESENTATIVE FROM THE MANUFACTURER WILL CONTACT YOU.



Roller coding

HDP STD 108 650 HDPN ROLLER 25 750 ST BC OE OE

ROLLER TYPE

| | |
|-----|-------------|
| HDP | HDPE |
| IMP | Impact |
| PIC | Picking |
| STR | Plasteel |
| ALR | Plasalu |
| GUI | Guide |
| RUB | Rubber disc |

BEARING PROTECTION

| | |
|-----|------------|
| STD | Standard |
| ASE | Anti Seize |

ROLLER DIAMETER (MM)

For all options see page 34-35

89
102
108
114
127
133
152
159
178
194

ROLLER LENGTH-FL (MM)

For all options see page 34-35
150-1750 mm

ROLLER SURFACE

| | |
|------|----------|
| HDPN | Standard |
| HGPS | Smooth |

L AND R SHAFT END DESIGN

| | |
|-------|------------------------|
| OE | Open end |
| CE | Closed end |
| APOE | Adapter plastic open |
| GAR | Drilled |
| THI | Internal thread metric |
| THO | External thread metric |
| GAROE | Open end drilled |
| CD | Custom design |

BEARING PROPERTIES

| | |
|-----|-----------------------|
| BC | LFD bearing closed |
| BSS | Bearing stainless |
| BCD | Custom design bearing |

SHAFT MATERIAL

| | |
|-------|----------|
| ST | E295 |
| SS304 | AISI 304 |
| SS316 | AISI 316 |

SHAFT LENGTH (MM)

For all options see page 34-35
180-1950 mm

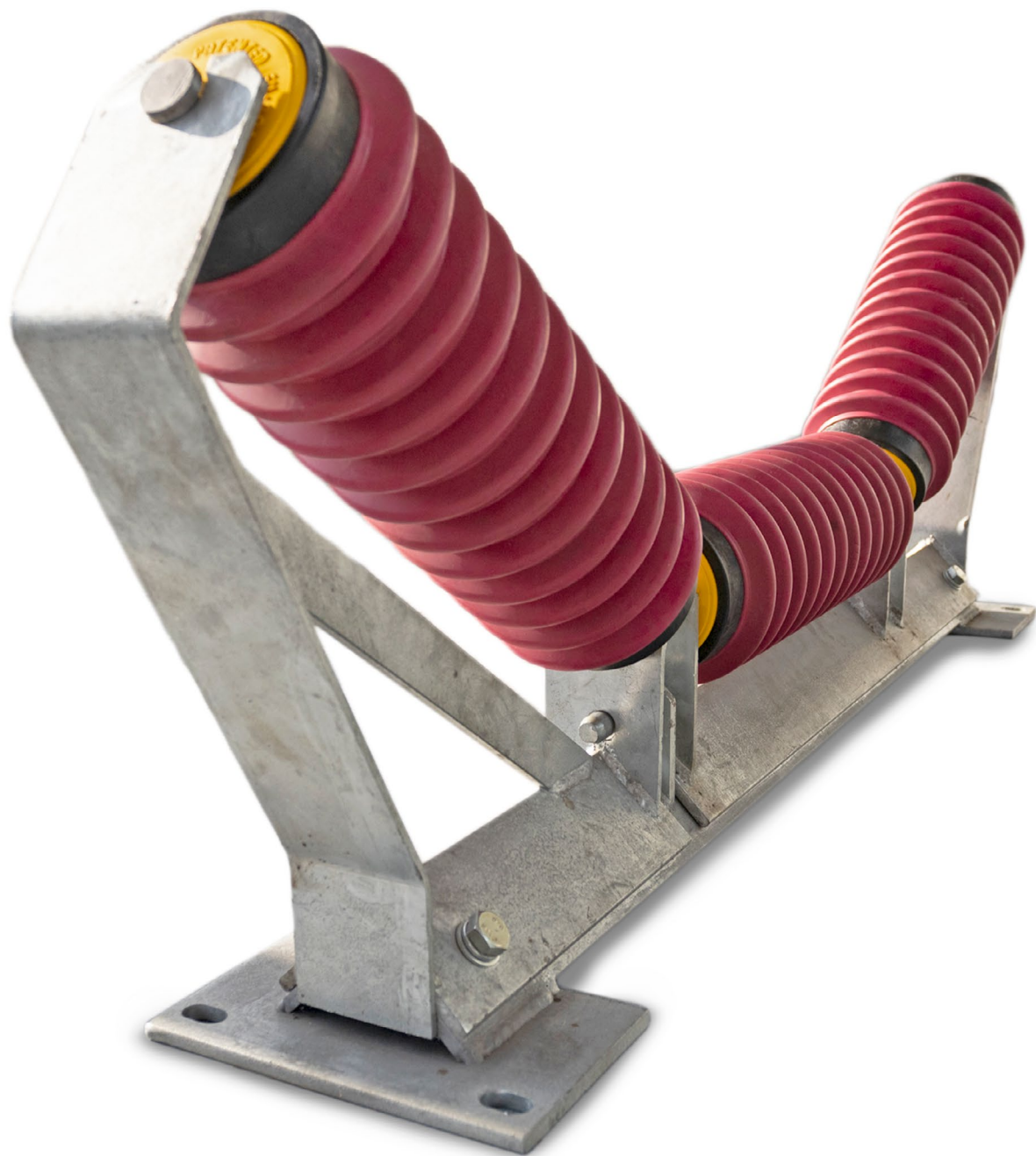
SHAFT DIAMETER (MM)

For all options see page 34-35
20
25
30
40
50

COLOUR MARKINGS

| | |
|----------------|--------|
| ROLLER | Yellow |
| ANTI-ROLL BACK | Green |





| EU-ROLLER product matrix | | | | | | | | | | | | | | |
|---|-------------------|-------------|--------|-----------|----------|----------|-----------|--------|----------|-----------|-----------|----------------|---|---|
| Roller families | Product design ID | HDPE ROLLER | | | | | | | | | | | | |
| Roller | | | | | | | | | | | | | | |
| Outer diameter (mm/inch) | D | 89/3,5" | 102/4" | 108/4,25" | 114/4,5" | 127/5" | 133/5,25" | 152/6" | 152/6" | 159/6,25" | 159/6,25" | 178/7" | | |
| STANDARD sealing system | STD | x | x | x | x | x | x | x | x | x | x | x | | |
| ANTI-SIEZE sealing system (dust protection) | ASE | | | | | x | x | x | | x | | x | | |
| Roller length (mm) | FL | 150 - 1750 | | | | 180-1750 | | | 230-1750 | | | | | |
| Roller | | | | | | | | | | | | | | |
| HDPE standard | HDPN | x | x | x | x | x | x | x | x | x | x | x | | |
| HDPE smooth | HDPS | x | x | x | x | x | x | x | x | x | x | x | | |
| Elastomer | ELAS | | | | | | | | | | | | | |
| Natur | NATU | | | | | | | | | | | | | |
| Painted | PAIN | | | | | | | | | | | | | |
| Roller colour | | | | | | | | | | | | | | |
| Yellow | ROLLER | x | x | x | x | x | x | x | x | x | x | x | | |
| Green | ANTI-ROLL BACK | | | | | | | | | | | | | |
| Red | future | | | | | | | | | | | | | |
| Blue | future | | | | | | | | | | | | | |
| Shaft | | | | | | | | | | | | | | |
| 20 mm shaft | d | x | x | x | x | x | x | | | | | | | |
| 25 mm shaft | | x | x | x | x | x | x | x | | x | | x | | |
| 30 mm shaft | | | | | | | | | x | | x | | x | |
| 40 mm shaft | | | | | | | | | | x | | x | | x |
| 50 mm shaft | | | | | | | | | | | | | | x |
| Shaft material E295 | ST | x | x | x | x | x | x | x | x | x | x | x | | |
| Shaft material AISI 304 | SS304 | x | x | x | x | x | x | x | x | x | x | x | | |
| Shaft material AISI 316 | SS316 | x | x | x | x | x | x | x | x | x | x | x | | |
| Shaft end | | | | | | | | | | | | | | |
| Round | RO | x | x | x | x | x | x | x | x | x | x | x | | |
| Open end | OE | x | x | x | x | x | x | x | x | x | x | x | | |
| Closed end | CE | x | x | x | x | x | x | x | x | x | x | x | | |
| Drilled | GAR | x | x | x | x | x | x | x | x | x | x | x | | |
| Drilled open end | GAROE | x | x | x | x | x | x | x | x | x | x | x | | |
| Adapter metal | ASHEX | x | x | x | x | x | x | x | x | x | x | x | | |
| Adapter plastic open | APOE | x | x | x | x | x | x | | | | | | | |
| Internal thread metric | THI | x | x | x | x | x | x | x | x | x | x | | | |
| External thread metric | THO | x | x | x | x | x | x | x | x | x | x | | | |
| Customer design | VE | x | x | x | x | x | x | x | x | x | x | x | | |
| Bearing | | | | | | | | | | | | | | |
| LFD bearing open | BO | x | x | x | x | x | x | x | x | x | x | x | | |
| LFD bearing closed | BC | x | x | x | x | x | x | x | x | x | x | x | | |
| LFD bearing stainless steel | BSS | x | x | x | x | x | x | x | x | x | x | x | | |
| Bearing house | BHDPE | HDPE | | | | | | | | | | | | |
| More | | | | | | | | | | | | | | |
| Garland connecting chain | RGC | | | | | | | | | | | This design is | | |
| Garland connecting eye | RGE | | | | | | | | | | | This design is | | |
| Garland connecting hook | RGH | | | | | | | | | | | This design is | | |



| | IMPACT / PICKING | | | | | PLASTEEL | | | | PLASALU | | | | RUBBER DISC | |
|--|------------------|----------|-----------|----------|-----------|-----------|--------|-----------|----------|-----------|----------|----------|-----------|-------------|--|
| properties | | | | | | | | | | | | | | | |
| 194/7,62" | 114/4,5" | 127/5" | 133/5,25" | 160/6,3" | 180/7,09" | 89/3,5" | 102/4" | 108/4,25" | 114/4,5" | 80/3,15" | 90/3,54" | 114/4,5" | 125/4,92" | 133/5,25" | |
| x | x | x | x | x | x | x | x | x | x | x | x | x | x | x | |
| x | | | | | | | | | | | | | | x | |
| | 150 - 1764 | 180-1764 | | 230-1764 | | 150 - 600 | | | | 150 - 600 | | | | 500 - 1764 | |
| surface | | | | | | | | | | | | | | | |
| x | | | | | | | | | | | | | | | |
| x | | | | | | | | | | | | | | | |
| | x | x | x | x | x | | | | | | | | | x | |
| | | | | | | x | x | x | x | x | x | x | x | | |
| | | | | | | x | x | x | x | | | | | | |
| markings | | | | | | | | | | | | | | | |
| x | x | x | x | x | x | x | x | x | x | x | x | x | x | x | |
| | | | | | | | | | | | | | | | |
| | | | | | | | | | | | | | | | |
| | | | | | | | | | | | | | | | |
| properties | | | | | | | | | | | | | | | |
| | x | x | x | | | x | x | | | x | x | | | x | |
| | x | x | x | x | x | x | x | x | x | x | x | x | x | x | |
| | | | | x | x | | | x | x | | | x | x | | |
| x | | | | | | | | | | | | | | | |
| x | | | | | | | | | | | | | | | |
| x | x | x | x | x | x | x | x | x | x | x | x | x | x | x | |
| x | x | x | x | x | x | x | x | x | x | x | x | x | x | x | |
| x | x | x | x | x | x | x | x | x | x | x | x | x | x | x | |
| design | | | | | | | | | | | | | | | |
| x | x | x | x | x | x | x | x | x | x | x | x | x | x | x | |
| x | x | x | x | x | x | x | x | x | x | x | x | x | x | x | |
| x | x | x | x | x | x | x | x | x | x | x | x | x | x | x | |
| x | x | x | x | x | x | x | x | x | x | x | x | x | x | x | |
| x | x | x | x | x | x | x | x | x | x | x | x | x | x | x | |
| x | x | x | x | x | x | x | x | x | x | x | x | x | x | x | |
| | x | x | x | | | x | x | x | x | x | x | x | x | x | |
| | x | x | x | x | x | x | x | x | x | x | x | x | x | x | |
| | x | x | x | x | x | x | x | x | x | x | x | x | x | x | |
| x | x | x | x | x | x | x | x | x | x | x | x | x | x | x | |
| options | | | | | | | | | | | | | | | |
| x | x | x | x | x | x | x | x | x | x | x | x | x | x | x | |
| x | x | x | x | x | x | x | x | x | x | x | x | x | x | x | |
| x | x | x | x | x | x | x | x | x | x | x | x | x | x | x | |
| | HDPE | | | | | HDPE | | | | HDPE | | | | HDPE | |
| options | | | | | | | | | | | | | | | |
| only possible for rollers equipped with a drilled (GAR) shaft. | | | | | | | | | | | | | | | |
| only possible for rollers equipped with a drilled (GAR) shaft. | | | | | | | | | | | | | | | |
| only possible for rollers equipped with a drilled (GAR) shaft. | | | | | | | | | | | | | | | |



Published 2025 | v01

YOUR DISTRIBUTOR



I.C. IBERCONVEYOR
ELEMENTOS TÉCNICOS PARA TRANSPORTADORES

Calle Vitoria 13
28232 Las Rozas de Madrid

www.iciberconveyor.com
Tel: (+34) 912 309 066
info@iciberconveyor.com